

Maison **DE GREZ**

powered by



patchwork



Nested in the charming village of Grez-sur-Loing, just a short 10-min drive from the INSEAD campus (or you can take the bus), **Maison De Grez** hosts up to 17 INSEAD students in a beautiful 19th-century mansion.



The **XXL kitchen / dining area** is located in a picturesque old *orangery*. It is equipped with multiple top-end appliances and boasts a huge banquet-like table seating up to 40 people: it is designed to encourage collective activity.



The main building hosts **16 private studios** spread across 4 floors, designed and furnished in the same fashion as the ones at Fleury or Demaison.






An entire floor is dedicated to **shared spaces**, including a spacious living room with a bar area, an oriental salon, a spa/jacuzzi, a gaming area and a gym room, leading out to an **8000-sqm garden** with a private access to the Loing river.

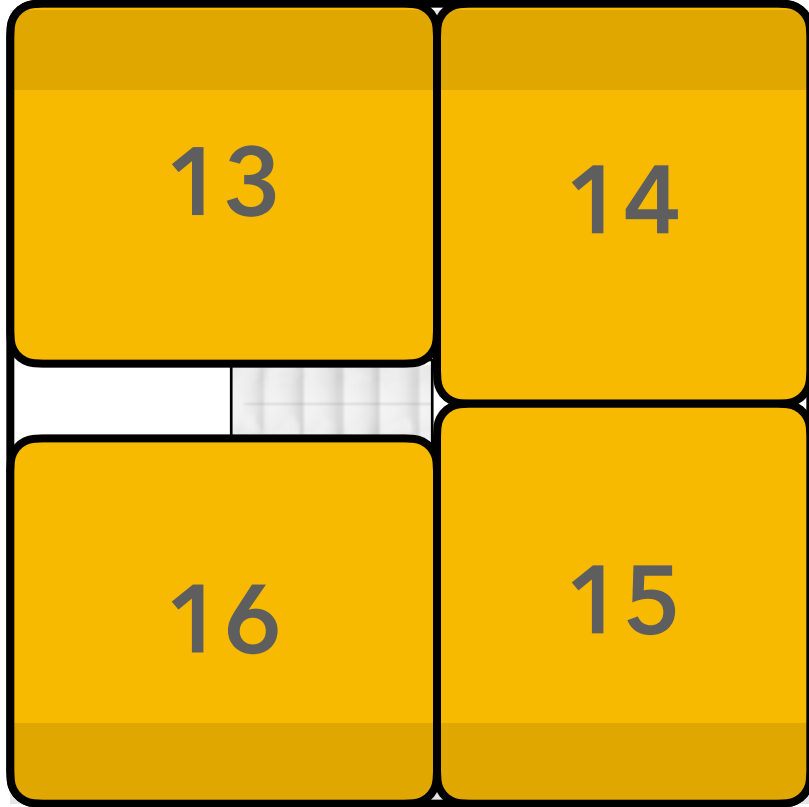
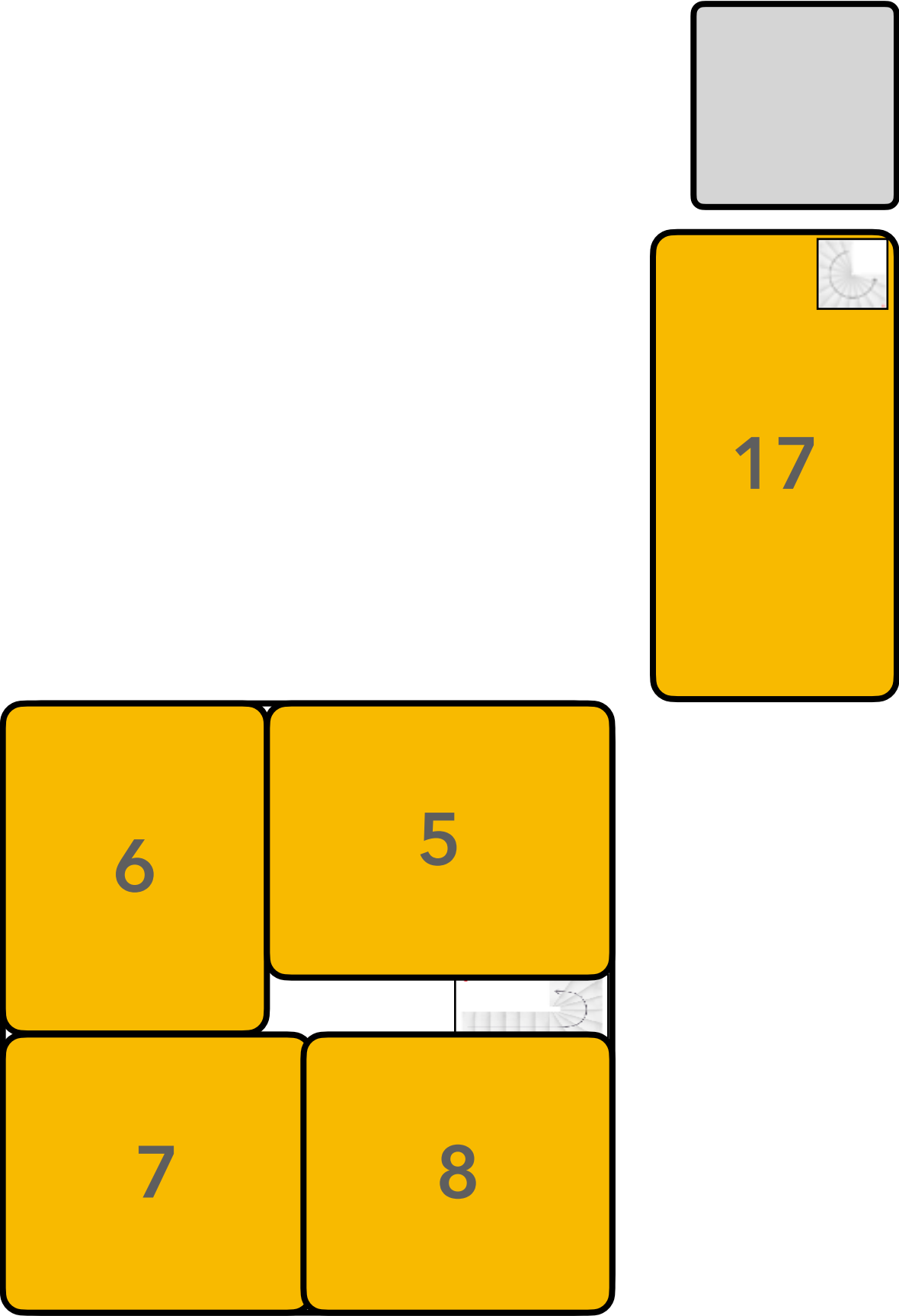
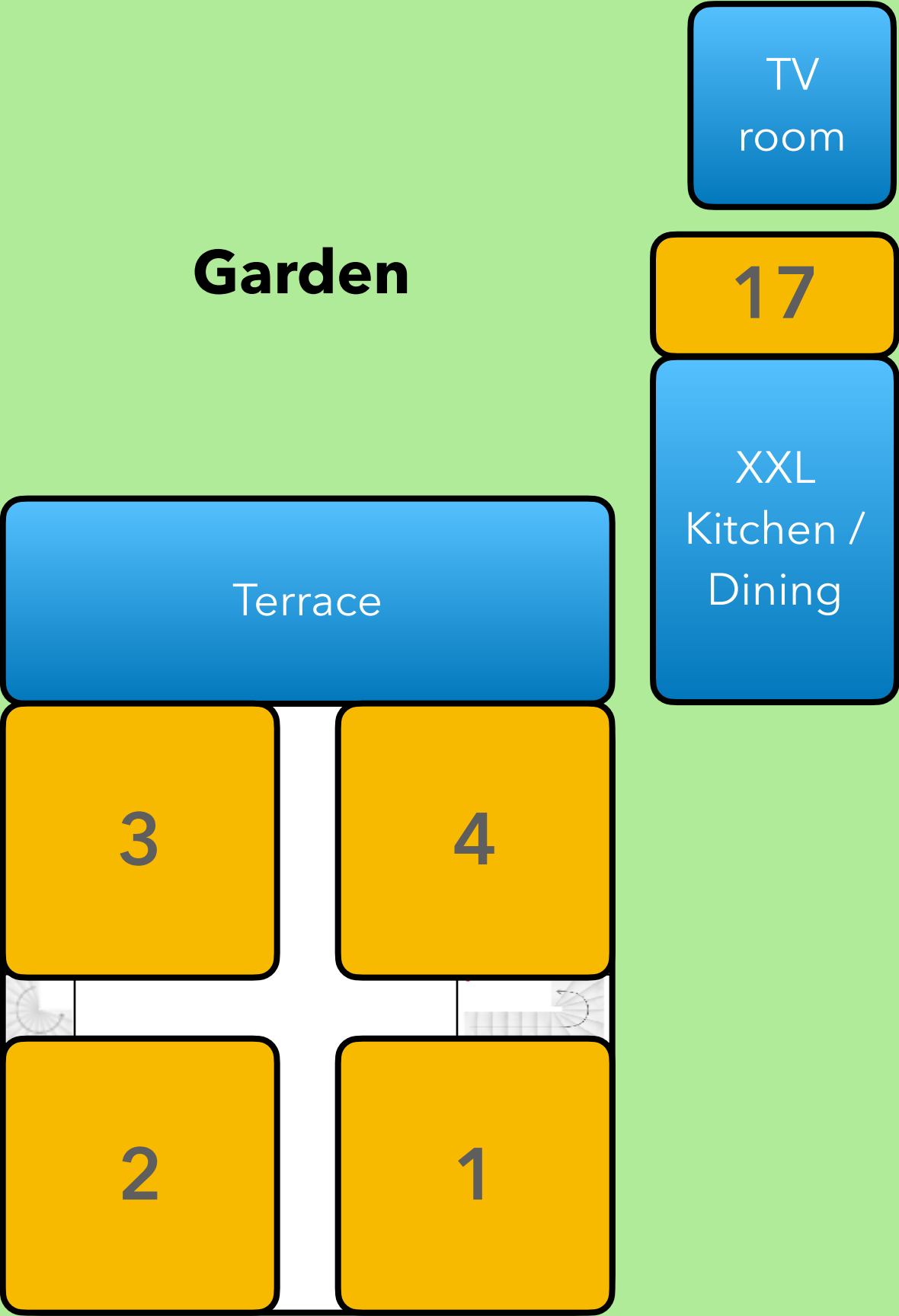


A **spacious duplex flat** (Flat 17) located in the *orangery*, offers a fully blown private kitchen. **Ideal for couples.**

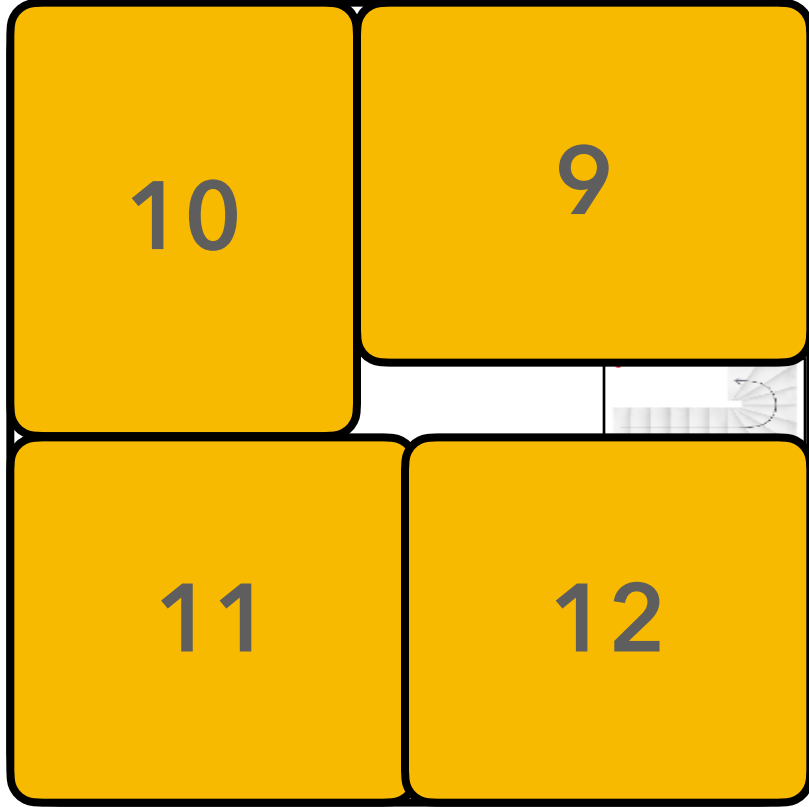
Shared spaces also include a **TV room** (with home theater and Netflix access) that can be set up as a **coworking space**, and a fully equipped **laundry room** (with several washers and dryers).

BUBBLE DIAGRAM

-  Shared spaces
-  Private flats
-  Technical rooms



Third floor

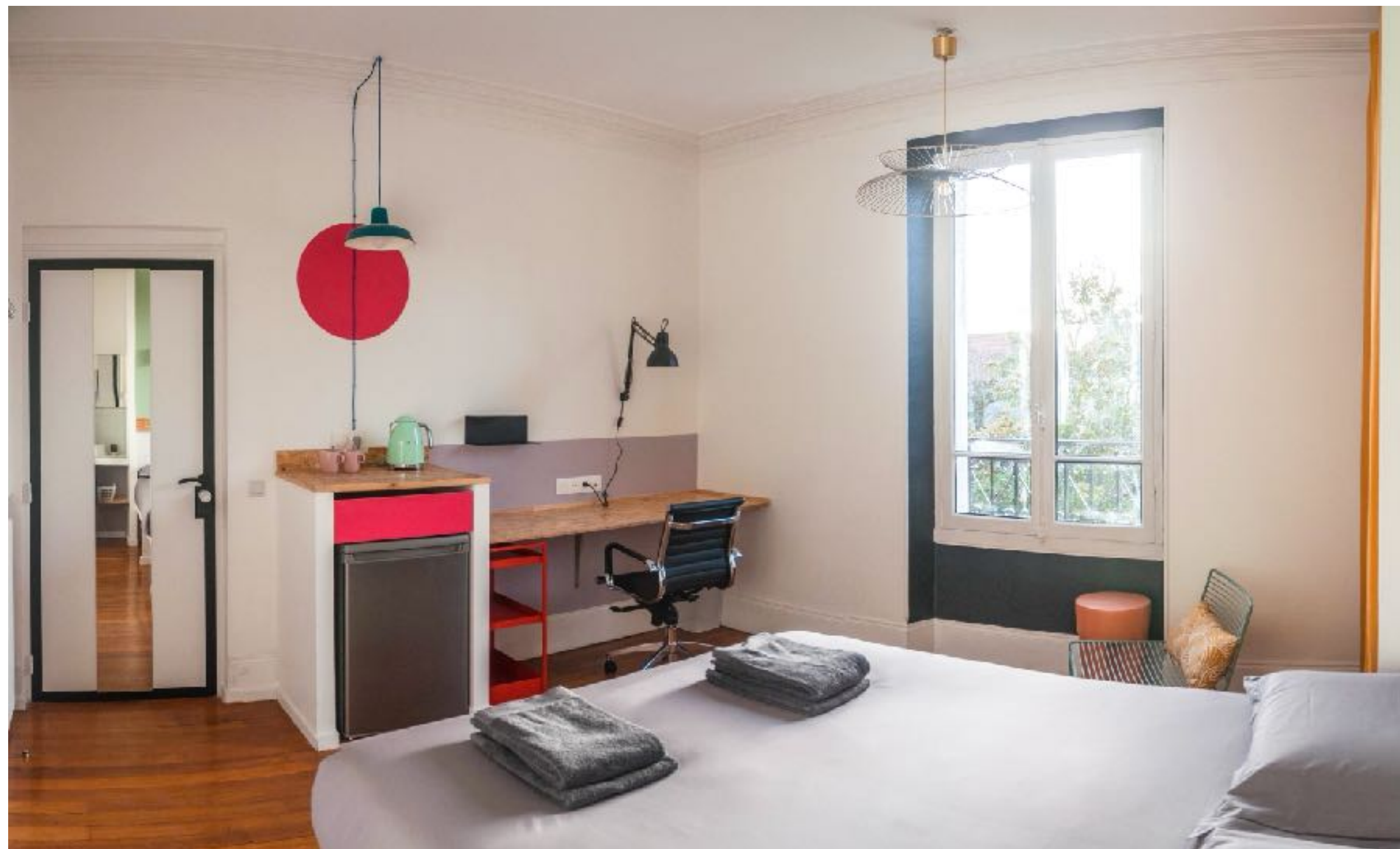


Garden level

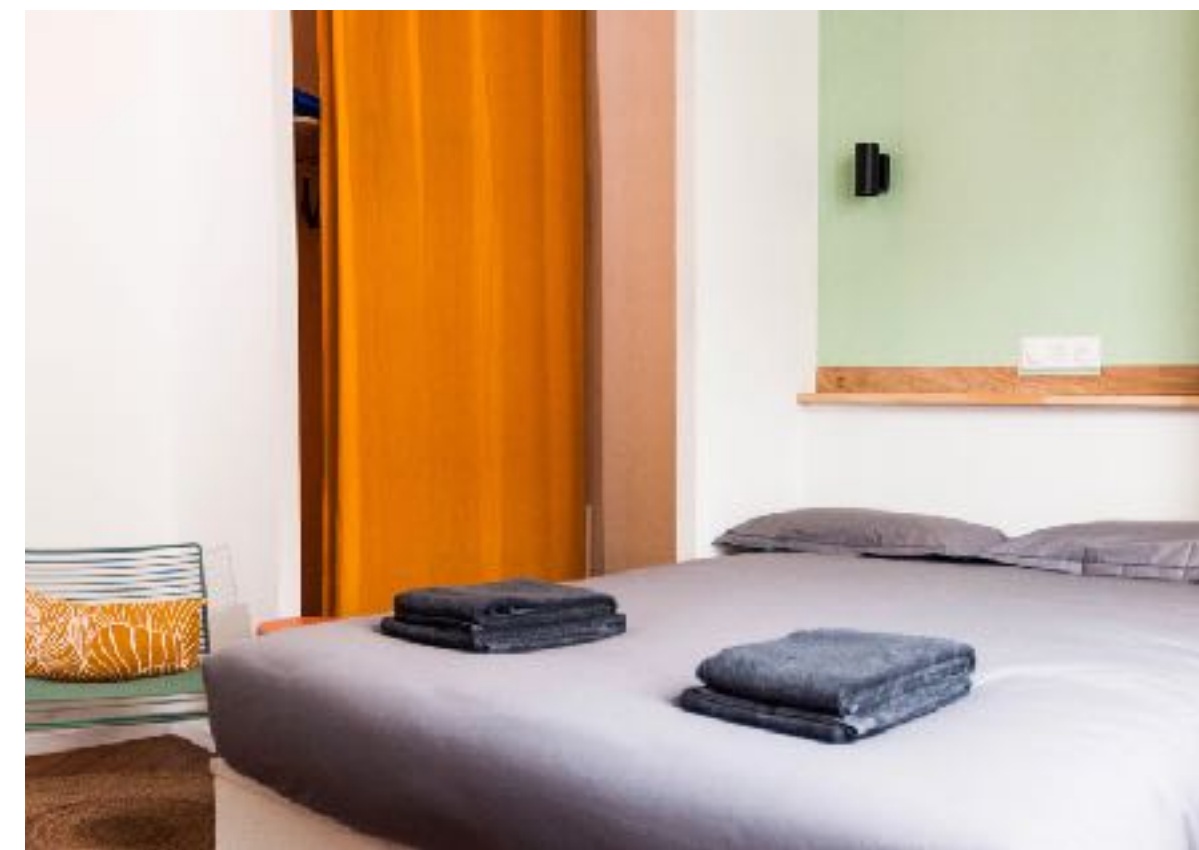
Ground floor

First floor

Second floor



All flats have private access codes. They're fitted with a queen-size bed (160 x 200 cm) with storage space below, a wardrobe closet with hangers and shelves, a built-in study desk with a comfortable designer chair, a reading corner, a cold kitchenette (small fridge and kettle) and of course a full private bathroom with toilet and shower.



Queen-size bed
160 x 200 cm
bed linen provided

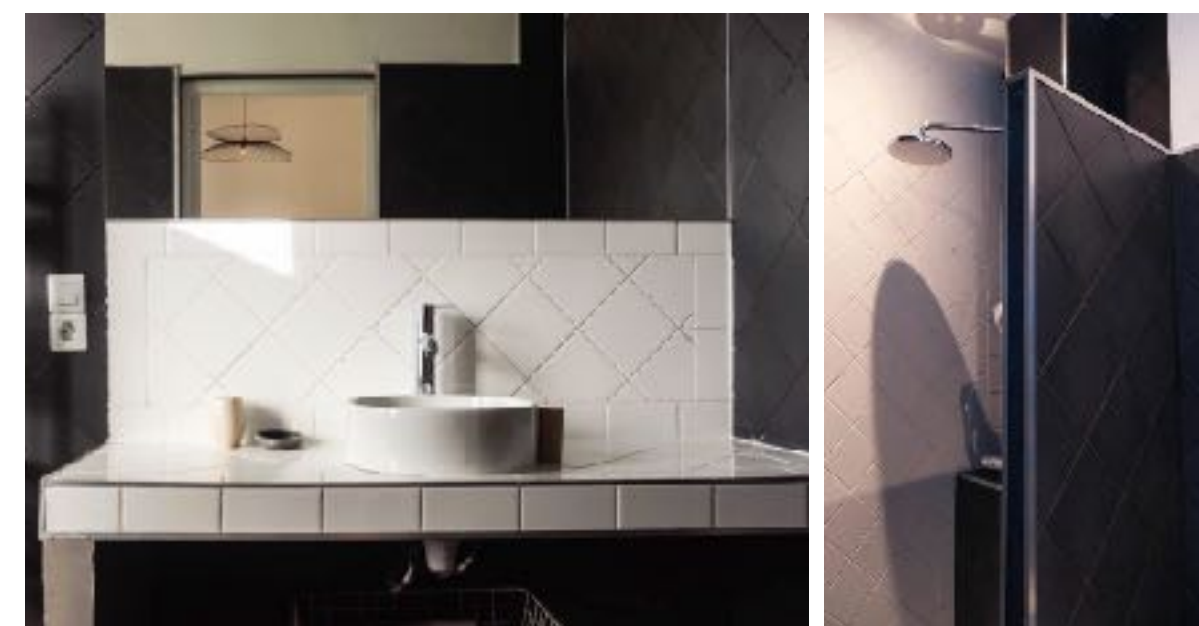
Wardrobe closet
with hangers and shelves

Reading corner
relaxing chair & side table


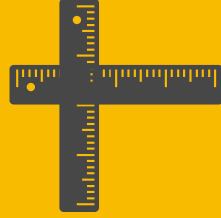


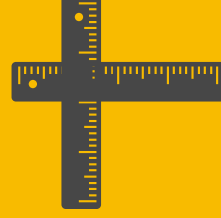



Built-in study desk
with ergonomic chair

Cold kitchenette
small fridge & kettle



Private bathroom
with toilet and shower
towels provided

Flat				Rent	Flat				Rent
1	Ground Floor	17 sqm	Courtyard View	1100€	9	Second Floor	28 sqm	Garden View	1150€
2	Ground Floor	21 sqm	Courtyard View	1100€	10	Second Floor	23 sqm	Garden View	1100€
3	Ground Floor	20 sqm	Garden View	1100€	11	Second Floor	20 sqm	Courtyard View	1100€
4	Ground Floor	22 sqm	Garden View	1100€	12	Second Floor	20 sqm	Courtyard View	1100€
5	First Floor	26 sqm	Garden View	1150€	13	Third Floor	16 sqm	Garden View	1000€
6	First Floor	24 sqm	Garden View	1100€	14	Third Floor	19 sqm	Garden View	1000€
7	First Floor	20 sqm	Courtyard View	1100€	15	Third Floor	19 sqm	Courtyard View	1000€
8	First Floor	20 sqm	Courtyard View	1100€	16	Third Floor	16 sqm	Courtyard View	1000€
					17	Duplex	50 sqm	Courtyard View	1400€